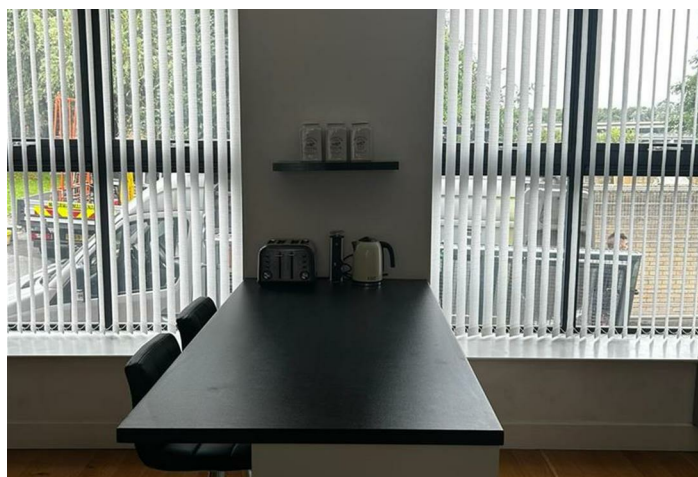


7 Lime square , Newcastle Upon Tyne NE1 2BA

- AVAILABLE AUGUST
- THREE BEDROOM
- ONE ALLOACTED PARKING SPACE
- FULLY FURNISHED
- TOWN HOUSE
- THREE BATHROOM
- NEWCASTLE UPON TYNE

£2,100





KITCHEN DINING AREA

LIVING ROOM

BEDROOM ONE

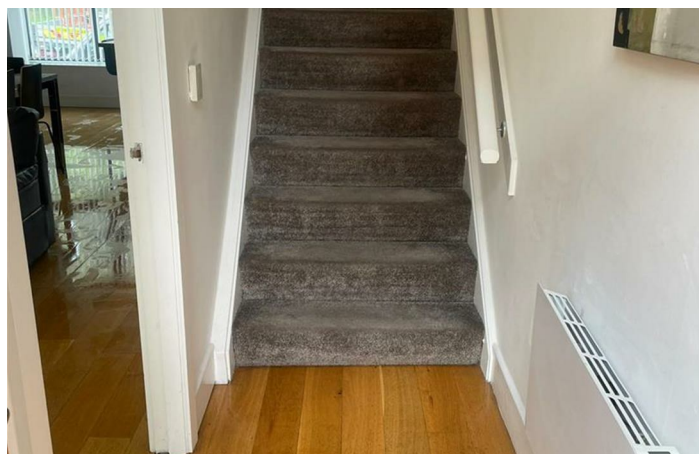
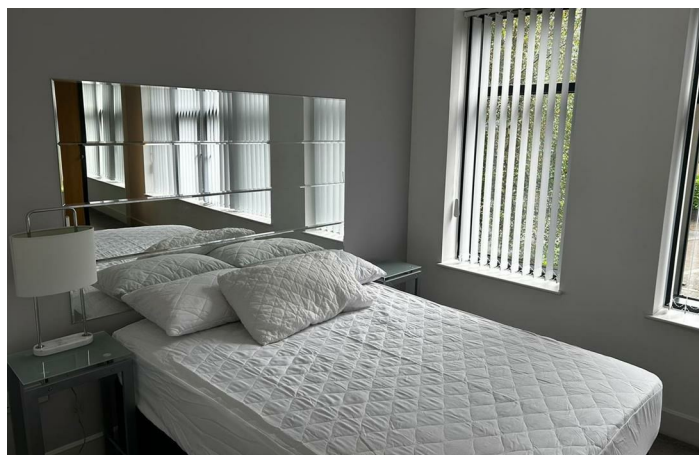
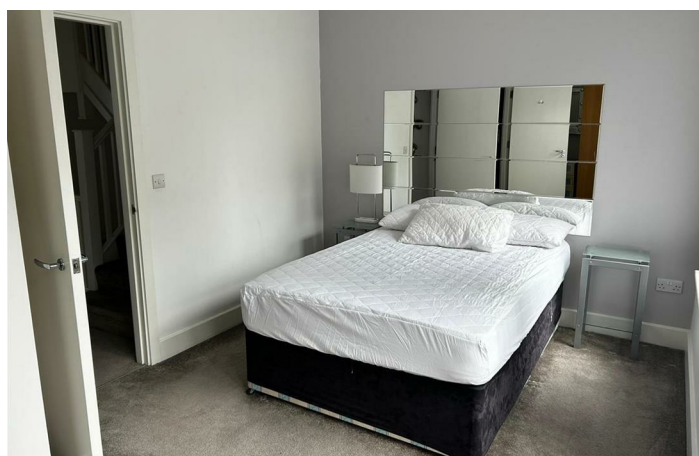
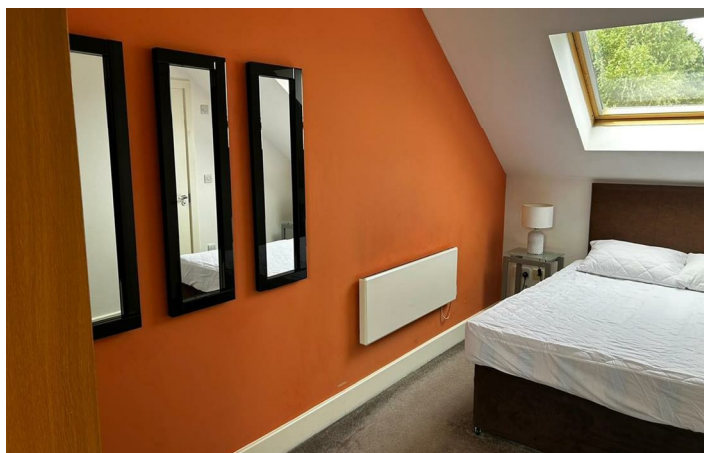
BATHROOM ONE

BEDROOM TWO

BATHROOM TWO


BEDROOM THREE


BATHROOM THREE





Local Authority
Council Tax Band
EPC Rating
Deposit
Furnishing Not specified

Energy Efficiency Rating		
	Current	Potential
Very energy efficient - lower running costs		
(92 plus) A		
(81-91) B		
(69-80) C		
(55-68) D		
(39-54) E		
(21-38) F		
(1-20) G		
Not energy efficient - higher running costs		
England & Wales	EU Directive 2002/91/EC	

Environmental Impact (CO ₂) Rating		
	Current	Potential
Very environmentally friendly - lower CO ₂ emissions		
(92 plus) A		
(81-91) B		
(69-80) C		
(55-68) D		
(39-54) E		
(21-38) F		
(1-20) G		
Not environmentally friendly - higher CO ₂ emissions		
England & Wales	EU Directive 2002/91/EC	



ML Estates Lettings Office

27 Avenue Road, Seaton Delaval, Tyne
And Wear, NE25 0DT

Contact

0191 237 60 60
lettings@mlestates.co.uk
www.mlestates.co.uk

Agents Note: Whilst every care has been taken to prepare these particulars, they are for guidance purposes only. All measurements are approximate and for general guidance purposes only and whilst every care has been taken to ensure accuracy, they should not be relied upon and potential buyers/tenants are advised to recheck the measurements.